

REM Inc.

INSTALLATION INSTRUCTIONS FOR THE TRITON TDAM FILTERS

(Designed for Trench Drains, Horizontal drains and other application)

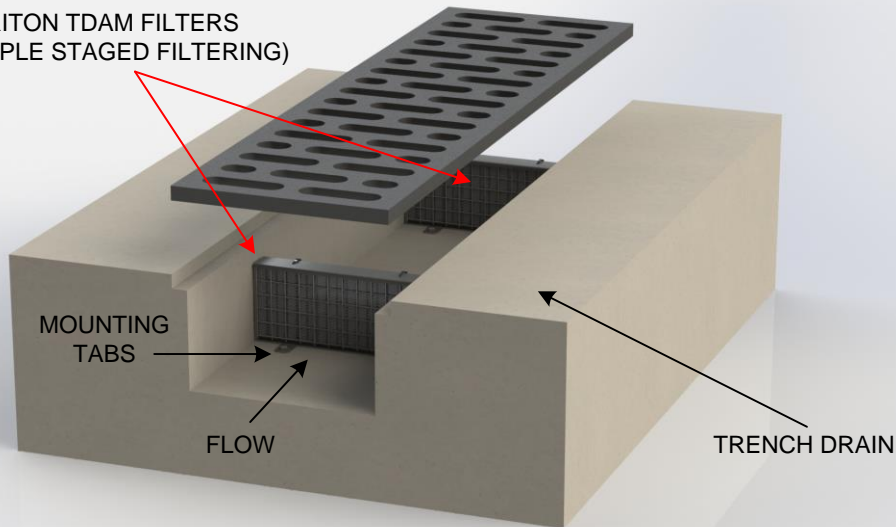
Step #1) TDAM's are to be placed every 3' to 4' from one another unless otherwise specified. (TDAM's next to exiting pipe of trench drain should be placed 4" to 6" from exit) Some trenches may have exit pipes at both ends or in the middle of the trench. Use the same instructions for each. For middle exiting pipes, place one TDAM on each side of exit pipe, 4" to 6" from exit pipe.
 For TDAM Battery Series, the TDAM – **BFTG** (BioFlex Prescreen TDAM) should be placed upstream from the TDAM – FOG filter. This allows for pre-filtering and polishing for the system.

Step #2) After deciding placement of TDAM's, Slide TDAM into trench drain, until it reaches the bottom of trench floor. Make sure to place additional gasket in area's where there are gaps or where water may try to bypass the TDAM.

Step #3) Once in position, using a hammer drill with 1/4" masonry drill bit, drill through existing mounting plate pre-drilled holes that are attached to bottom of TDAM. Hammer in anchor bolt (Red Head), place washer over plate, then tighten down with nut. Some units require the use of side mounting tabs as well.

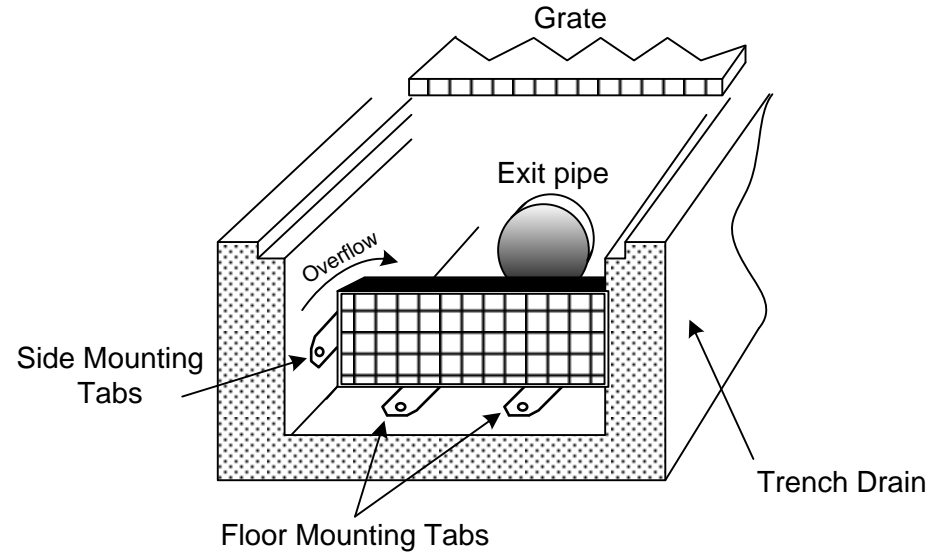
Note: Some TDAM's may require two mounting plates per TDAM.

TRITON TDAM FILTERS
(MULTIPLE STAGED FILTERING)

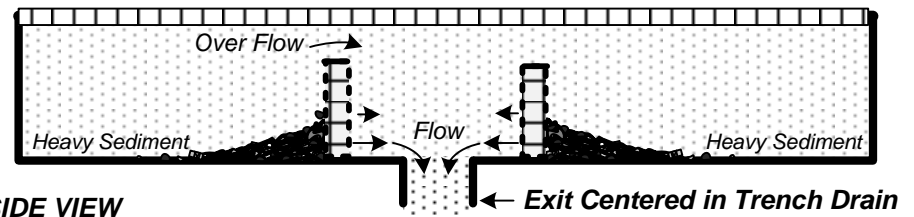


- TOOLS REQUIRED:**
- 1) Hammer Drill, with 1/4" masonry drill bit.
 - 2) Hammer.
 - 3) 1/4" X 2" or 3" Concrete Anchors. i.e. (Red Head)
 - 4) 7/16" Socket Drive.

TRITON TDAM_{tm}



TRITON TDAM with center exit pipe



SIDE VIEW

THE DESIGN AND DETAIL OF THIS DRAWING IS THE PROPERTY OF REM INC. AND IS NOT TO BE USED EXCEPT IN CONNECTION WITH OUR WORK, DESIGN AND INVENTION RIGHTS ARE RESERVED.

Patent Pending

PH: (888) 526-4736

DIMENSIONS ARE IN INCHES UNLESS OTHERWISE NOTED.

REM Inc.

REM TDAM's

(Installation instruction for trench drains and other application)

SIZE	DRAWN BY:	FOR:	REV
	C.F.	Trench Drains	
SCALE	DATE:	SHEET	1 OF 1
1/4 : 1	5/2014		