

REM Inc.

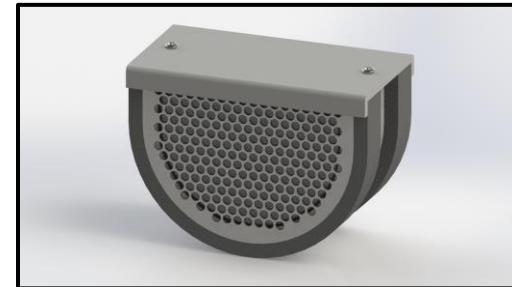
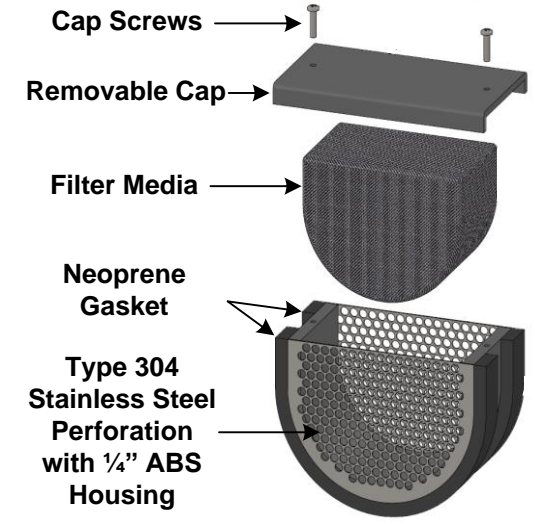
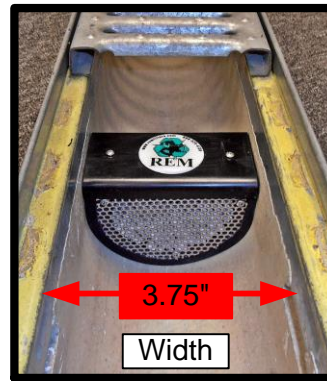
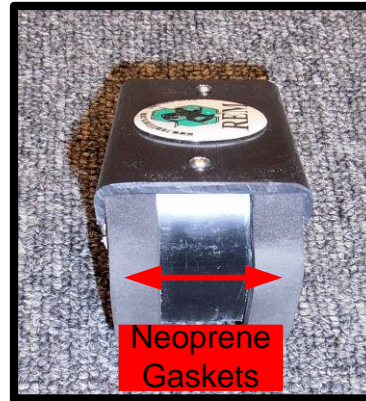
INSTALLATION INSTRUCTIONS FOR THE TRITON TDAM TT2 FILTERS

(Designed for Trench Drains, Horizontal drains and other application)

Step #1) TDAM TT2's are to be placed every 3' to 4' from one another unless otherwise specified. (TT2's next to exiting pipe of trench drain should be placed 4" to 6" from exit)
Some trenches may have exit pipes at both ends or in the middle of the trench. Use the same instructions for each. For middle exiting pipes, place one TDAM on each side of exit pipe, 4" to 6" from exit pipe.

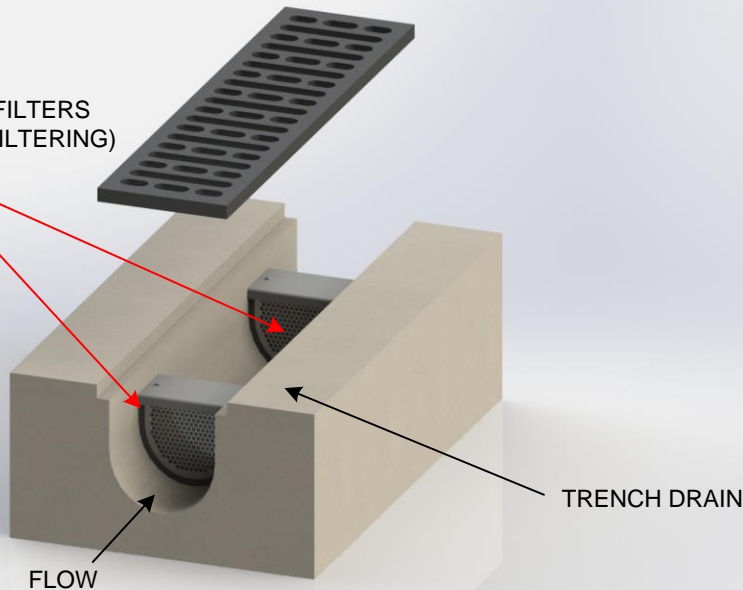
Note: For TDAM TT2 Battery Series, the TDAM-BFTG (BioFlex Prescreen TT2) should be placed upstream from the TDAM-FOG filter. This allows for pre-filtering and polishing for the system.

Step #2) After deciding placement of TT2's, Slide TT2's into trench drain, until it reaches the bottom of trench drain floor. Make sure to place additional gasket in area's where there are gaps or where water may try to bypass the TDAM.

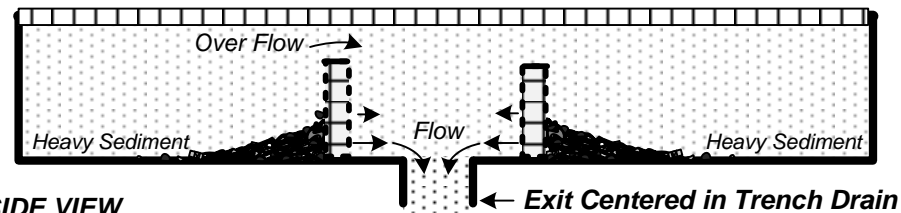


MADE IN USA

TRITON TDAM TT2 FILTERS
(MULTIPLE STAGED FILTERING)



TRITON TDAM TT2 with center exit pipe



SIDE VIEW

THE DESIGN AND DETAIL OF THIS DRAWING IS THE PROPERTY OF REM INC. AND IS NOT TO BE USED EXCEPT IN CONNECTION WITH OUR WORK, DESIGN AND INVENTION RIGHTS ARE RESERVED.

Patent Pending

PH: (888) 526-4736

DIMENSIONS ARE IN INCHES UNLESS OTHERWISE NOTED.

REM Inc.

REM TDAM TT2's

(Installation instruction for 4" trench drains and other application)

SIZE	DRAWN BY:	FOR:	REV
	C.F.	4" Trench Drains	
SCALE	DATE:	SHEET	1 OF 1
1/4 : 1	5/2014		