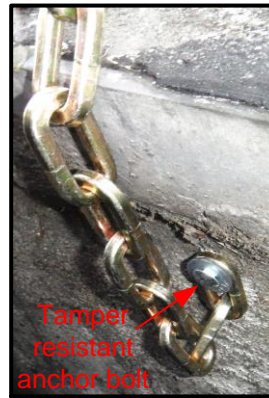
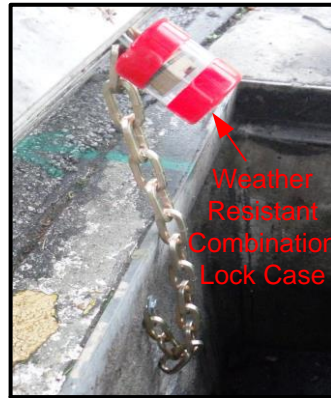
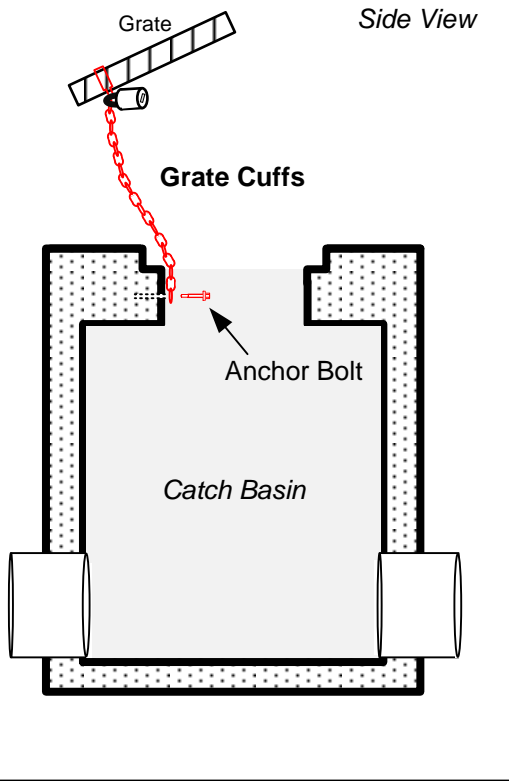


REM's SECURITY SERIES (GRATE CUFFS)

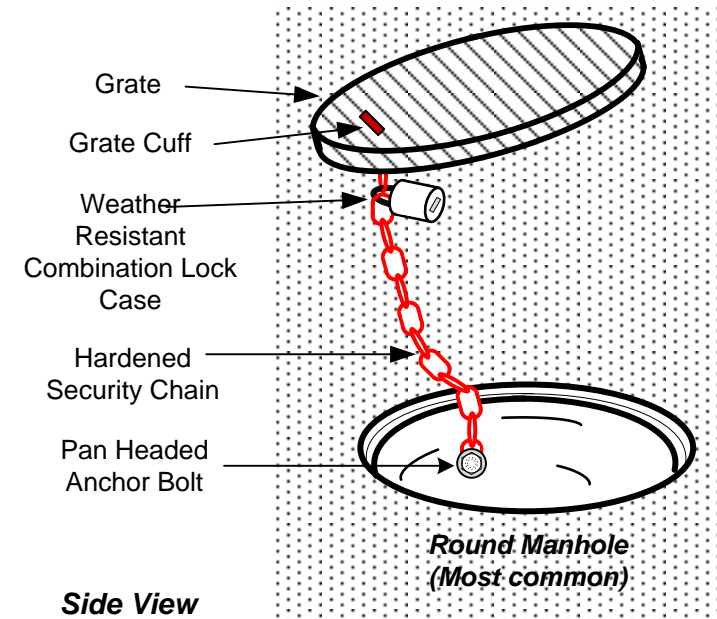
REM Security Grate Cuffs - are designed to reduce thefts of all types of storm drain grates and manhole covers. Configured for galvanized and cast-iron lids on stormwater catch basins, vaults, septic tanks, grease interceptors, wet wells, sand/oil interceptors, REM Grate Cuffs are a deterrent effectively eliminating expensive replacement costs and reducing property owner liability from hazards associated with open drains and vaults.



Features and Benefits:

- 35.5" Heavy duty chain.
- Hardened security chain.
- Squared chain resist cutting.
- Lock has octagonal shackle for cut resistance.
- Lock has sealed dials and shackle.
- Lock has roller pin locking for maximum pick, shim, rap and pry resistance.
- Lock is weather resistant.
- Lock has anti shim.
- Combination lock. Set and reset your own combination.

Grate Security SERIES
By REM Inc. (888.526.4736)



Notes:

- The Security Series REM Grate Cuffs are designed for all different types of grates: galvanized, cast-iron, steel, plastic, brass, etc..
- Configured with 3/8" hardened iron cast in a squared shape to resist cutting.
- Chain length of 3 1/2' allows grate lids to be set aside to access catch basin.
- Octagonal shaped combination lock is cut resist..
- Sealed dials and shackle lock for maximum weather protection.
- Roller pin locking for maximum pick, shim, rap and pry resistance.
- Lock has anti shim feature.
- Set unique four digit code.
- Easily removable REM Grate Cuff weather housing. .
- Maintenance information is available upon request by contacting REM at sales@remfilters.com or (888) 526-4736.

THE DESIGN AND DETAIL OF THIS DRAWING IS THE PROPERTY OF REM INC. AND IS NOT TO BE USED EXCEPT IN CONNECTION WITH OUR WORK, DESIGN AND INVENTION RIGHTS ARE RESERVED.

U.S. Patent Pending

PH: (888) 526-4736

DIMENSIONS ARE IN INCHES UNLESS OTHERWISE NOTED.

REM Inc.

SECURITY SERIES (Grate Cuff)

DRAWN BY:

C.F.

FOR:

Deterrent for grate theft

REV

SCALE 1/4" = 1"

DATE: 12/3/2014

SHEET 1 OF 1