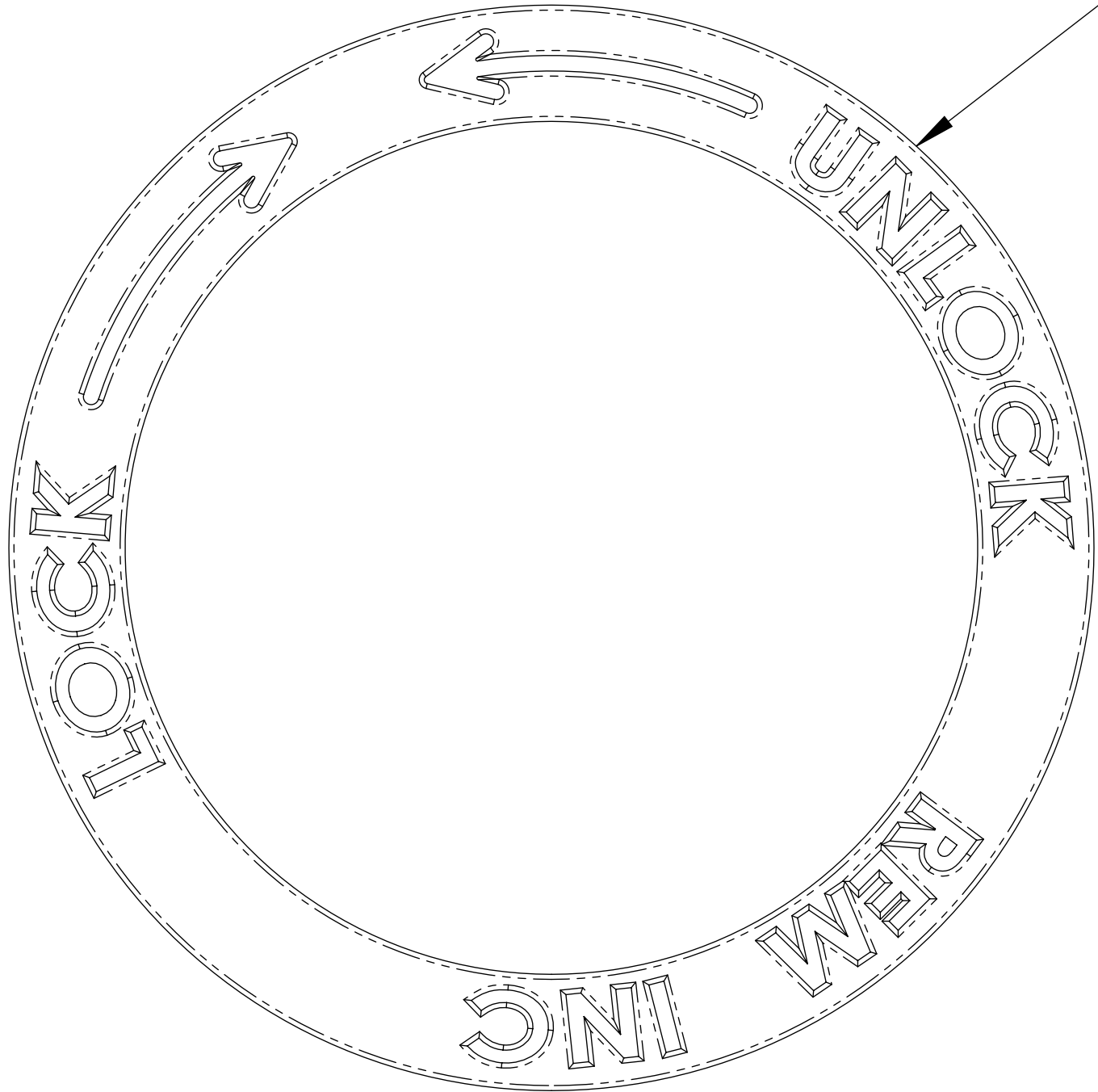


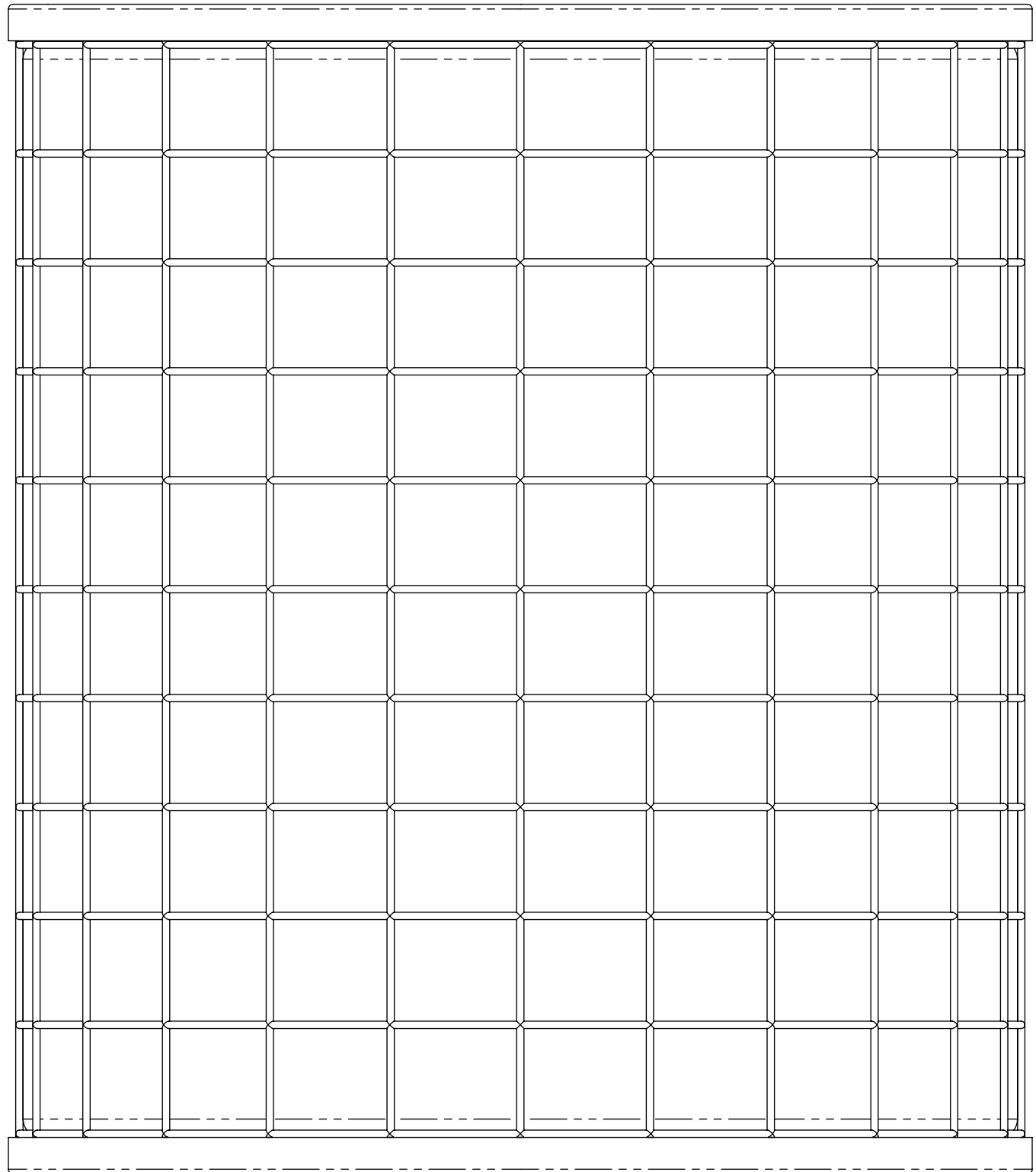
- A

	<b>Revel Environmental Manufacturing Inc.</b> <a href="http://www.revelmfg.com">www.revelmfg.com</a>		
	Northern California 960-B Detroit Avenue Concord, California 94518 P: (925) 676-4736 F: (925) 676-8676	Southern California 2110 South Grand Avenue Santa Ana, California 92705 P: (714) 557-2626 F: (714) 557-2679	
<b>REM</b> <a href="http://www.revelmfg.com">www.revelmfg.com</a>			
<b>TITLE:</b> <div style="text-align: center; font-size: 2em; font-weight: bold;">TOP HAT FILTER</div>			
<b>SIZE</b> <div style="font-size: 3em; font-weight: bold;">D</div>	<b>DWG. NO.</b> <div style="font-size: 3em; font-weight: bold;">01-004</div>	<b>REV</b> <div style="font-size: 3em; font-weight: bold;">A</div>	
<b>SCALE: 1:3</b>		<b>WEIGHT:</b>	<b>SHEET 1 OF 4</b>





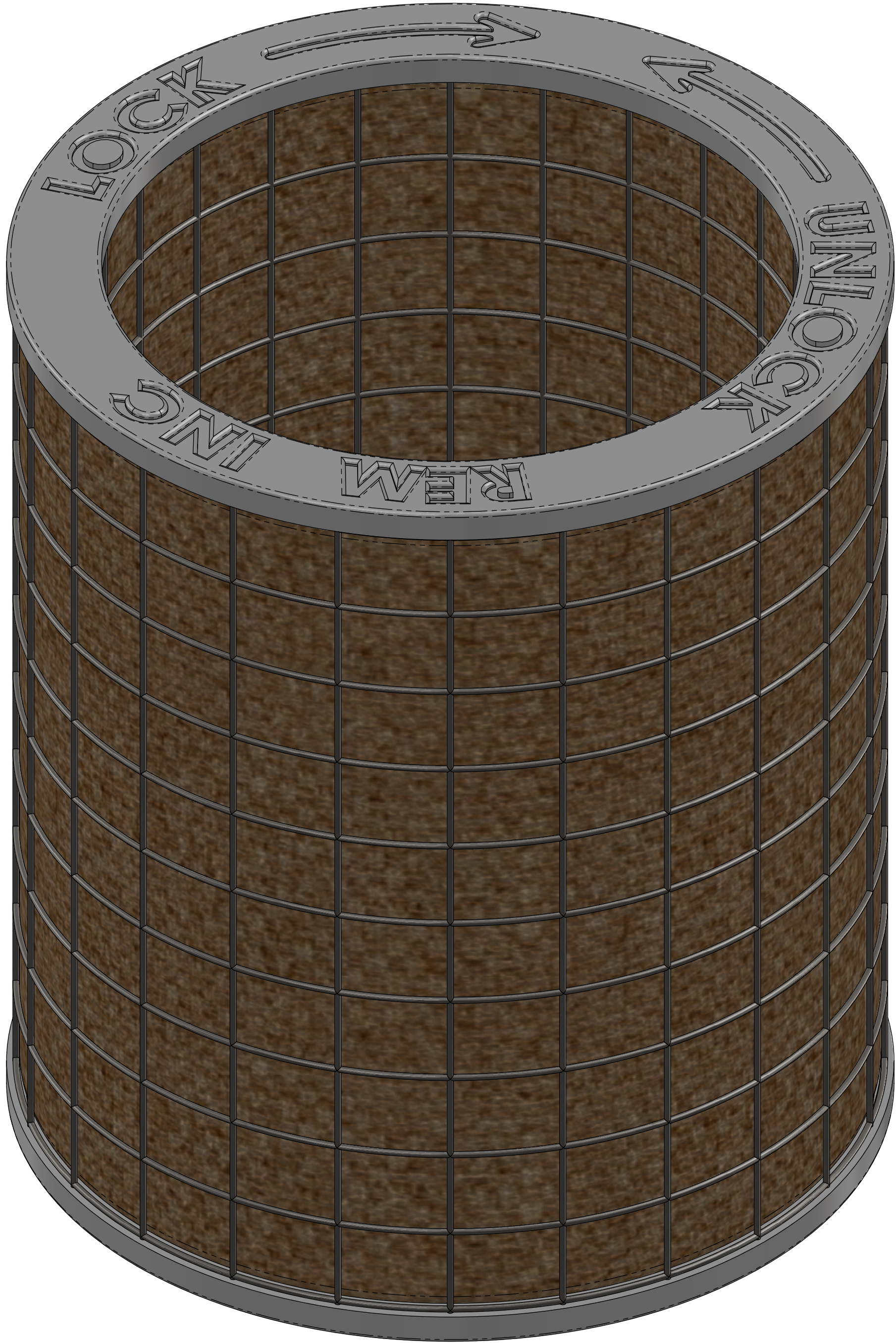
AVAILABLE IN  $\varnothing$  7",  
 $\varnothing$  10",  $\varnothing$  14", OR  
 $\varnothing$  24" DIAMETERS




AVAILABLE IN:  
4", 8", 16", AND 32"  
STANDARD HEIGHTS.

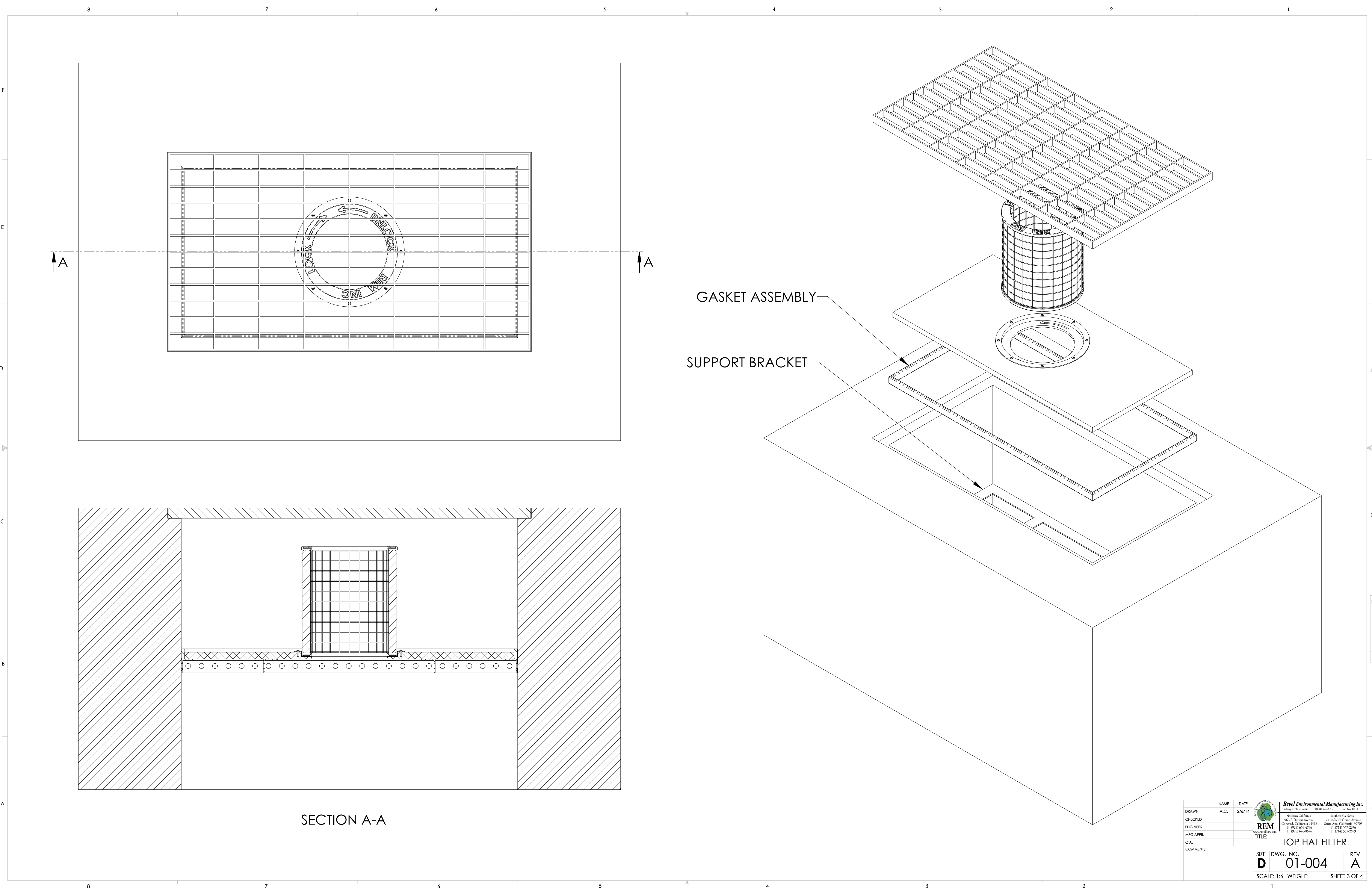
17" AND 34" HEIGHT  
AVAILABLE WITH  
 $\varnothing$  24" DIAMETER FILTER

MODEL:	INLET ID ( inch x inch )
TR12RD-TH Configured with:	
Cartridge: TR7-CART (4") (Shallow)	12" Dia. RD
Cartridge: TR7-CART (8") § (Standard)	
Cartridge: TR7-CART (16") (Deep)	
TR1212-TH Configured with:	
Cartridge: TR7-CART (4)	12" X 12"
Cartridge: TR7-CART (8) § (Standard)	
Cartridge: TR7-CART (16)	
TR16RD-TH Configured with:	
Cartridge: TR7-CART (4)	16" Dia. RD
Cartridge: TR7-CART (8) § (Standard)	
Cartridge: TR7-CART (16)	
TR1616-TH Configured with:	
Cartridge: TR7-CART (4)	16" X 16"
Cartridge: TR7-CART (8) § (Standard)	
Cartridge: TR7-CART (16)	
TR18RD-TH Configured with:	
Cartridge: TR10-CART (4)	18" Dia. RD
Cartridge: TR10-CART (8) § (Standard)	
Cartridge: TR10-CART (16)	
TR1818-TH Configured with:	
Cartridge: TR10-CART (4)	18" X 18"
Cartridge: TR10-CART (8) § (Standard)	
Cartridge: TR10-CART (16)	
TR1824-TH Configured with:	
Cartridge: TR10-CART (8) § (Standard)	18" X 24"
Cartridge: TR10-CART (16)	
Cartridge: TR10-CART (32)	
TR2024-TH Configured with:	
Cartridge: TR10-CART (8) § (Standard)	20" X 24"
Cartridge: TR10-CART (16)	
Cartridge: TR10-CART (32)	
TR2424-TH Configured with:	
Cartridge: TR14-CART (8)	24" X 24"
Cartridge: TR14-CART (16) § (Standard)	
Cartridge: TR14-CART (32)	
TR24RD-TH Configured with:	
Cartridge: TR14-CART (8)	24" Dia. RD
Cartridge: TR14-CART (16) § (Standard)	
Cartridge: TR14-CART (32)	
TR2436-TH Configured with:	
Cartridge: TR14-CART (8)	24" X 36"
Cartridge: TR14-CART (16) § (Standard)	
Cartridge: TR14-CART (32)	
TR30RD-TH Configured with:	
Cartridge: TR14-CART (8)	30" Dia. RD
Cartridge: TR14-CART (16) § (Standard)	
Cartridge: TR14-CART (32)	
TR3030-TH Configured with:	
Cartridge: TR14-CART (8)	30" X 30"
Cartridge: TR14-CART (16) § (Standard)	
Cartridge: TR14-CART (32)	
TR2448-TH Configured with:	
Cartridge: TR14-CART (8) (Qty 2)	24" X 48"
Cartridge: TR14-CART (16) (Qty 2) § (Standard)	
Cartridge: TR14-CART (32) (Qty 2)	
TR3636-TH Configured with:	
Cartridge: TR14-CART (8)	36" X 36"
Cartridge: TR14-CART (16) § (Standard)	
Cartridge: TR14-CART (32)	
TR36RD-TH Configured with:	
Cartridge: TR14-CART (8)	36" Dia. RD
Cartridge: TR14-CART (16) § (Standard)	
Cartridge: TR14-CART (32)	
TR3648-TH Configured with:	
Cartridge: TR14-CART (8) (Qty 2)	36" X 48"
Cartridge: TR14-CART (16) (Qty 2) § (Standard)	
Cartridge: TR14-CART (32) (Qty 2)	
TR42RD-TH Configured with:	
Cartridge: TR14-CART (8)	42" Dia. RD
Cartridge: TR14-CART (16) § (Standard)	
Cartridge: TR14-CART (32)	
TR4848-TH Configured with:	
Cartridge: TR24-CART (8)	48" X 48"
Cartridge: TR24-CART (17) § (Standard)	
Cartridge: TR24-CART (34)	
TR48RD-TH Configured with:	
Cartridge: TR24-CART (8)	48" Dia. RD
Cartridge: TR24-CART (17) § (Standard)	
Cartridge: TR24-CART (34)	



DRAWN	NAME	DATE	 <b>REM</b> www.revel.com	<b>Revel Environmental Manufacturing Inc.</b> info@revel.com (888) 526-4736 Lic. No. 857410	
CHECKED	A.C.	2/24/14		Northern California 5608 S. Dyer Ave. Covina, California 91703 P: (951) 676-4736 F: (951) 676-4676	
ENG APPR.				Southern California 23111 South Grand Avenue Santa Ana, California 92705 P: (714) 557-2676 F: (714) 557-2879	
MFG APPR.					
G.A.					
COMMENTS:			TITLE: <b>TOP HAT FILTER</b>		
SIZE			DWG. NO.		REV
<b>D</b>			<b>01-004</b>		<b>A</b>
SCALE: 1:2			WEIGHT:		SHEET 2 OF 4




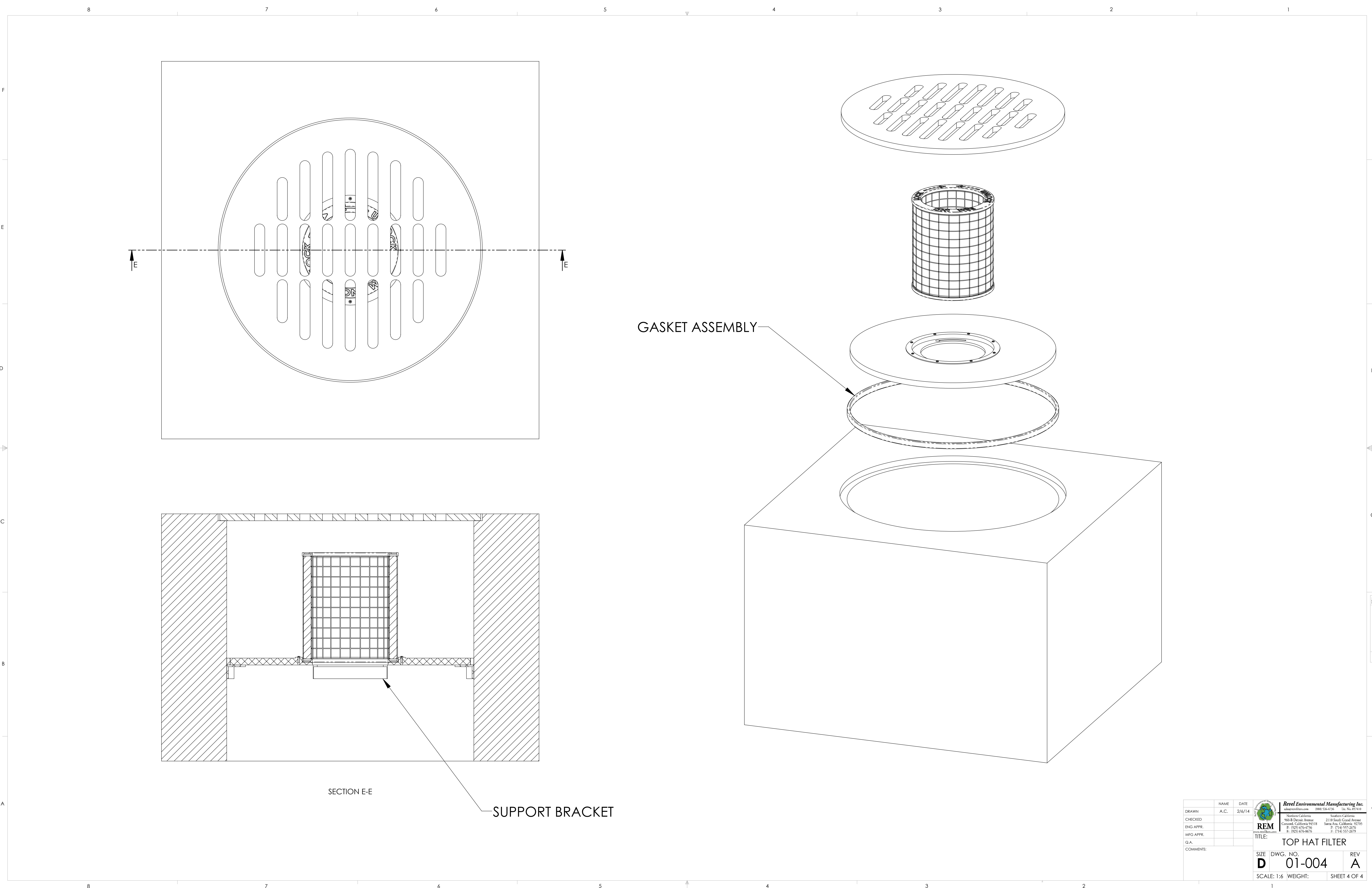



SECTION A-A

GASKET ASSEMBLY

SUPPORT BRACKET

DRAWN		NAME	DATE			<b>Revel Environmental Manufacturing Inc.</b> aboutremfilter.com (888) 536-4736	
CHECKED		A.C.	2/6/14	Northern California		Southern California	
ENG APPR.				906-B Denise Avenue Concord, California 94518		2110 South Grand Avenue Santa Ana, California 92705	
MFG APPR.				P: (925) 676-4736		P: (714) 557-2676	
Q.A.				F: (925) 676-4676		F: (714) 557-2679	
COMMENTS:				TITLE:		TOP HAT FILTER	
SIZE		DWG. NO.		REV			
<b>D</b>		<b>01-004</b>		<b>A</b>			
SCALE: 1:6		WEIGHT:		SHEET 3 OF 4			



	NAME	DATE	 <b>REM</b> www.remel.com	<b>Revel Environmental Manufacturing Inc.</b> aboutrem@rem.com 888.536.4736 Lic. No. 857610	
DRAWN	A.C.	2/6/14		Northern California Southern California	
CHECKED				906-B Dense Avenue 2110 South Grand Avenue Covina, California 91718 Santa Ana, California 92705	
ENG APPR.				P: (925) 676-4736 P: (714) 557-2676	
MFG APPR.				F: (925) 676-4676 F: (714) 557-2676	
Q.A.			TITLE: <b>TOP HAT FILTER</b>		
COMMENTS:			SIZE	DWG. NO.	REV
			<b>D</b>	<b>01-004</b>	<b>A</b>
			SCALE: 1:6 WEIGHT:		SHEET 4 OF 4