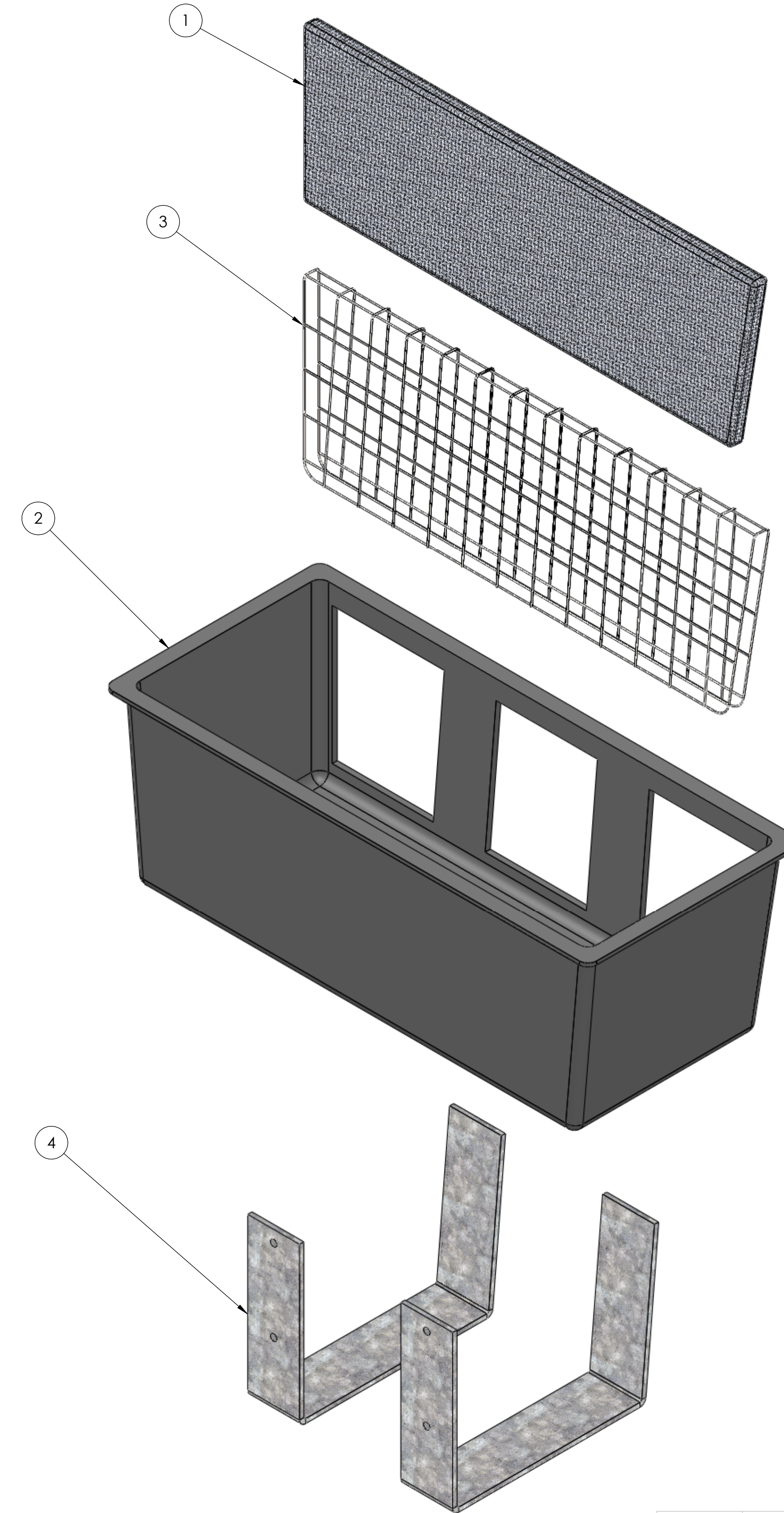
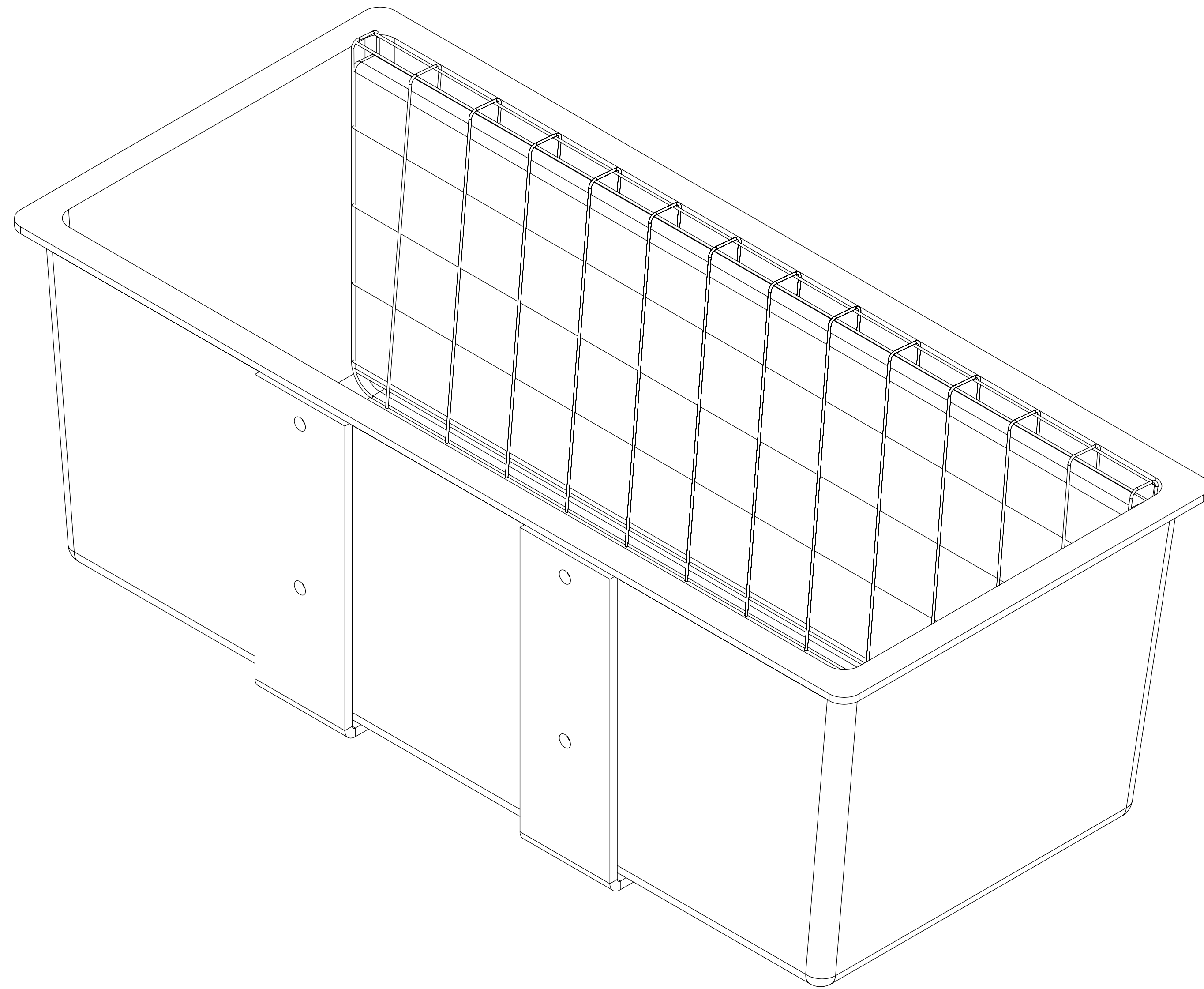


1. All dimensions are in feet, unless otherwise noted.
2. REM TRITON - TRC - PERF - FTC Series Curb Inlet Filters (Full Trash Capture) can be sized to fit most industry standard curb inlet catch basins. REM also designs custom filters for unique stormwater infrastructure and applications.
3. REM TRITON filter assemblies are constructed using Non-reactive High Density Polystyrene plastic (HIPS) with UV inhibitors and rubber additives, utilizing more than 100% recycled content.
4. TRITON filter assemblies are secured to the inside wall of the catch basin utilizing two 3/16" thick cradle brackets. TRITON filter screens are constructed utilizing 22ga., Type 304 Stainless Steel perforation.
5. Perforated Stainless Steel screen is configured with 4.8mm openings, having a 51% Open Area for excellent flow rates comparative to its size.
6. Secondary filtration is also available using additional media strategies that can address other specific pollutant of concerns beyond just trash capture. Such as REM's FOG media, which can effectively encapsulates liquefied petroleum hydrocarbons (Fats, Oils & Grease including animal fats). The media's hydrophobic characteristic allows for greater polishing of flow resulting in the reduction of Total Suspended Solids (TSS). Suspended solid reduction includes but is not limited to debris, trash, silt sediment and agglomerated heavy metals. (Additional media options are available including mixed blends of granulated carbon [AC], and Zeolite [ZEO].
7. REM TRITON filter cartridges, if used in secondary filtration, are removable for ease of cleaning and maintenance.
8. REM Triton filter designs include an overflow bypass, eliminating backups and pooling during high flow rain events.
9. See REM Specifier Sheets for size, model and flow rate information.
10. REM TRITON filters shall be installed and maintained in accordance with manufacturer recommendations.
11. Maintenance information and replacement REM Media Packs are available upon request by contacting REM at sales@remfilters.com or (888) 526-4736.
12. Made in the USA.

ITEM NO.	DESCRIPTION	QTY.
1	PERFORATED SCREEN	1
2	DEBRIS BASIN	1
3	SST MEDIA CAGE	1
4	BRACKET CRADLE	2



PROPRIETARY AND CONFIDENTIAL
 THE INFORMATION CONTAINED IN THIS DRAWING IS THE SOLE PROPERTY OF REM. ANY REPRODUCTION IN PART OR AS A WHOLE WITHOUT THE WRITTEN PERMISSION OF REM IS PROHIBITED.

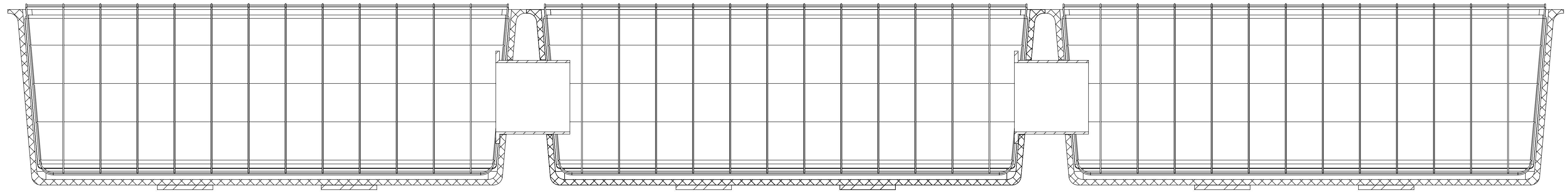
UNLESS OTHERWISE SPECIFIED:		DRAWN	NAME	DATE
DIMENSIONS ARE IN INCHES		CHECKED	A.C.	1/26/14
TOLERANCES:		ENG APPR.		
FRACTIONAL ±		MFG APPR.		
ANGULAR: MATCH ±		G.A.		
BEND ±		COMMENTS:		
ONE PLACE DECIMAL ± 0.5				
TWO PLACE DECIMAL ± 0.1				
MATERIAL:				
INTERPRET ALL GEOMETRIC TOLERANCING PER: AS9100				
NEXT ASSY	USED ON	FINISH		
APPLICATION				

Revel Environmental Manufacturing Inc.

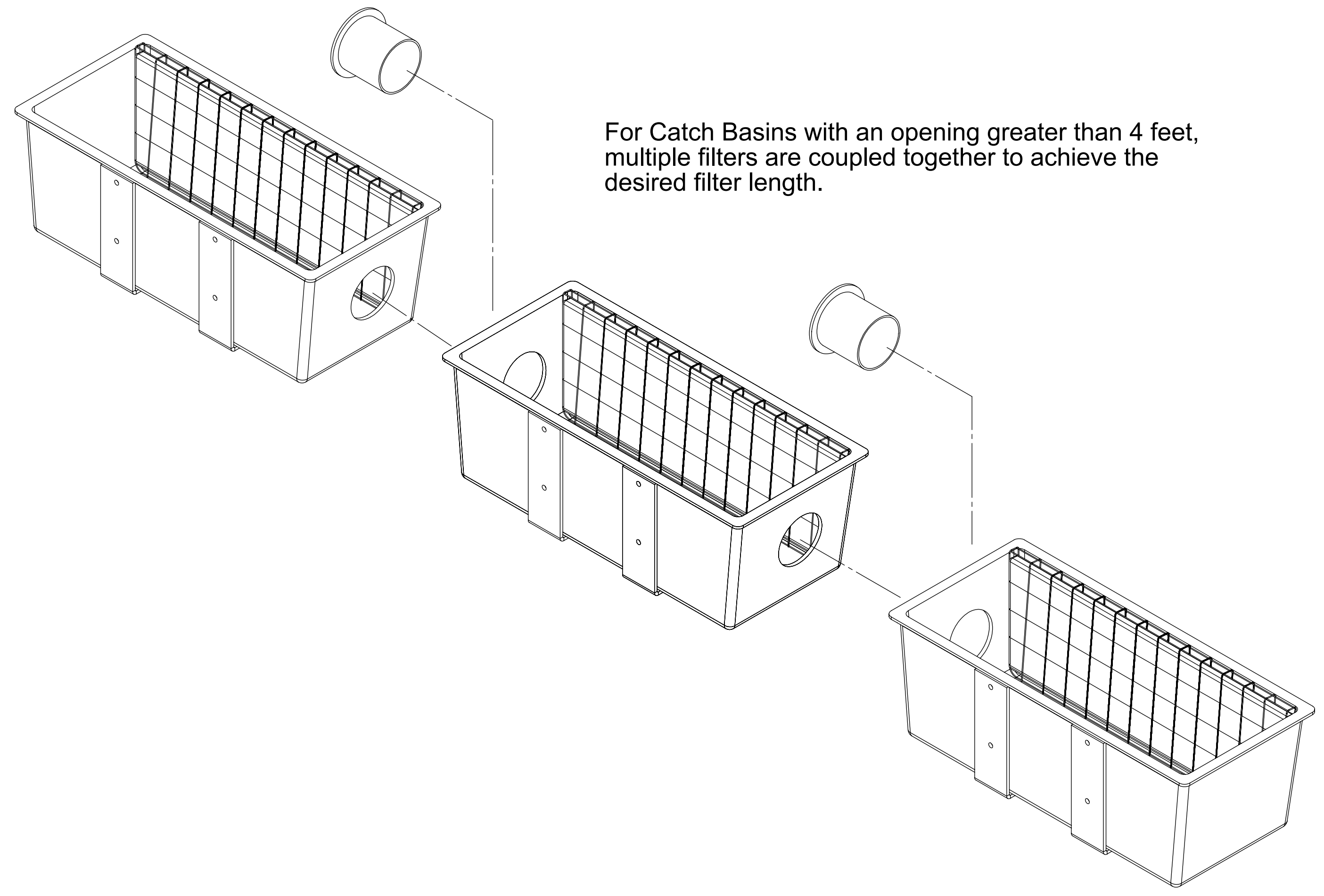
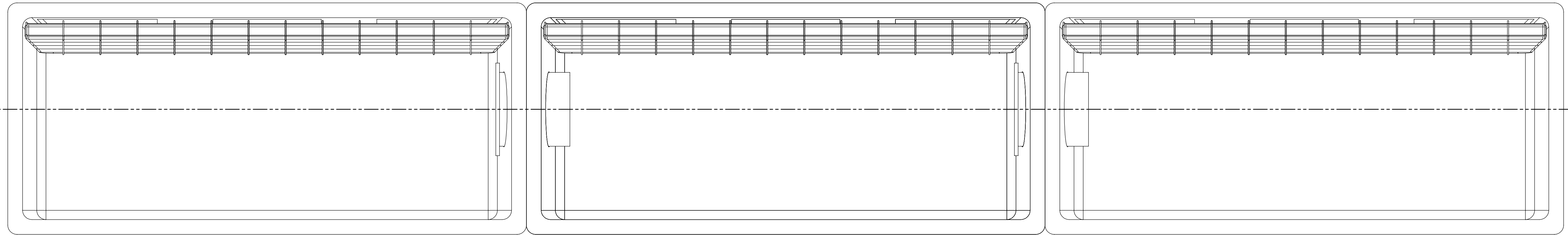
908 R Derris Avenue
Covina, California 91705
P: (925) 676-4736
F: (925) 676-8676

3110 South Grand Avenue
Santa Ana, California 92705
P: (714) 557-2676
F: (714) 557-2679


TITLE: CURB INLET FILTER-PERF-FTC		
SIZE	DWG. NO.	REV
D	01-0001	A
SCALE: 1:10 WEIGHT:	SHEET 1 OF 3	



SECTION A-A
SCALE 1 : 3



For Catch Basins with an opening greater than 4 feet,
multiple filters are coupled together to achieve the
desired filter length.

DRAWN	NAME	DATE	 Revel Environmental Manufacturing Inc. <small>4160070.com 888-535-6736 Lic. No. 97749</small>
CHECKED	A.C.	1/26/14	
ENG APPR.			<small>Northern California 3110 South Grand Avenue 96088-Derris Avenue Santa Ana, California 92705 Central California 94518 Santa Ana, California 92705 P: (925) 676-4736 P: (714) 557-2676 F: (925) 676-8676 F: (714) 557-2679</small>
MFG APPR.			TITLE:
G.A.			CURB INLET FILTER-PERF-FTC
COMMENTS:			SIZE DWG. NO. REV
			D 01-0001 A
			SCALE: 1:10 WEIGHT: SHEET 3 OF 3

REV
D 01-0001