



Revel Environmental Manufacturing Inc.

sales@remfilters.com (888) 526-4736 Lic. No. 857410

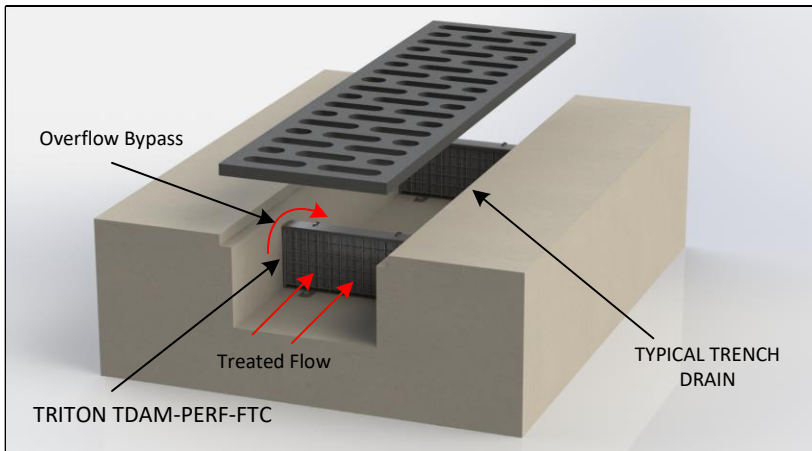
Northern California
960-B Detroit Avenue
Concord, California 94518
P: (925) 676-4736
F: (925) 676-8676

Southern California
2110 South Grand Avenue
Santa Ana, California 92705
P: (714) 557-2676
F: (714) 557-2679

REM TRITON TDAM - PERF - FTC

Product Overview:

REM designed the TRITON TDAM-PERF-FTC Filter Series to provide a highly adaptable solution that allows the flexibility to maximize the filter treatment flow rates and pollutant capturing capacity in trench drain and shallow type drains applications. The TRITON TDAM-PERF-FTC Series uses Perforated Stainless Steel (PERF) Screen that is designed to capture debris, trash and sediment while sustaining very high treatment rates as a Full Trash Capture System as per the 5mm CSWRCB specification. TRITON TDAM-PERF-FTC Filters can be sized to fit most industry standard trench drains, parkway drains, shallow structures, and catch basins. They are sized to spec and scalable for all different lengths and applications. Media strategy may also be optimized for specific pollutant concerns.



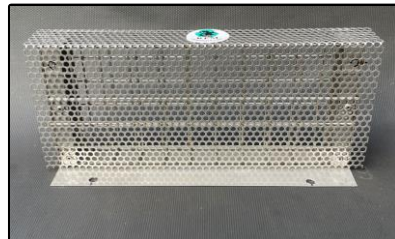
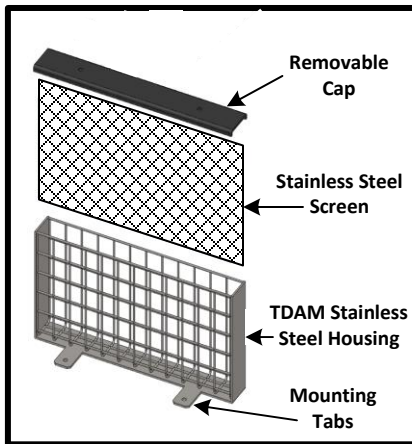
Standard Size Dimensions (Not all model and sizes are listed here)

Model:	TT2-PERF-FTC	TDAM5(5)-PERF-FTC	TDAM8(10)-PERF-FTC	TDAM12(5)-PERF-FTC
Width:	4"	5"	8"	12"
Height:	4"	5"	10"	5"
Trench Width	4"	5"	8"	12"
Est. Bypass	*(CFS)	*(CFS)	*(CFS)	*(CFS)
Max Treatment Rate:	.11 (CFS)	.28 (CFS)	.86 (CFS)	.65 (CFS)

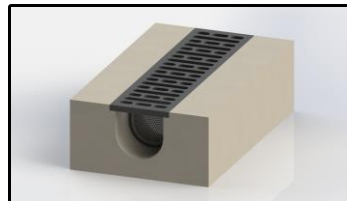
* Note: Overflow bypass will vary depending upon the depth of each trench drain.

Notes:

- TDAM housings are constructed utilizing Type 304 16ga. Stainless Steel, with 1" and 2" welded square openings.
- Removable cartridge tops and bottoms are constructed utilizing over 90% recycled ABS Plastic or fiberglass.
- Filter screen utilizes 22ga, Type 304 Stainless Steel perforation.
- Perforated Stainless Steel is configured with a 4.8mm openings, having a 51% Open Area for excellent flow rates comparative to its size.
- REM TRITON filter cartridges can be removable for ease of cleaning and maintenance.
- Filter designs include a high flow overflow bypass to eliminate pooling or flooding during heavy rain events.
- Optional Stainless Steel Cartridge housings are capable of housing an absorbent media if ever required, with no retrofitting or modifications needed.
- Maintenance information and replacement REM Media Packs are available upon request by contacting REM at sales@remfilters.com or (888) 526-4736.
- **Made in the USA.**



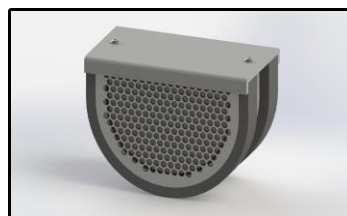
TDAM12 (5)-PERF-FTC



Rounded bottom trench drains.



TDAM15(5) installed



TDAM (TT2)-PERF-FTC for rounded bottom 4" ID trench drains.

