



Revel Environmental Manufacturing Inc.

sales@remfilters.com (888) 526-4736 Lic. No. 857410

Northern California
960-B Detroit Avenue
Concord, California 94518
P: (925) 676-4736
F: (925) 676-8676

Southern California
2110 South Grand Avenue
Santa Ana, California 92705
P: (714) 557-2676
F: (714) 557-2679

Media Packs are interchangeable (as shown)

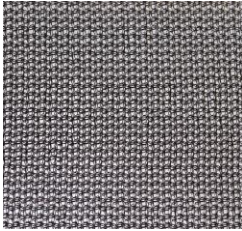


REM TR14(12) Cartridge Housing For Media Pack Configurations

REM Media Configuration Options

REM Filters can be customized using different media strategies configured to target site-specific pollutants. A combination of media is often recommended to maximize pollutant removal effectiveness.

MADE IN U.S.A.



Geotextile Media Pack Housing

Filter media is housed in a mono-filament weaved geotextile containment pack. The filter's vertical cartridge system requires flow to move laterally through the geotextile pack on both sides – once during ingress and again during egress – providing a two stage sieve for fine material removal. The mono-filament geotextile reduces occlusion and blinding allowing for greater treatment flow compared to flat weave fabrics.



REM FOG Media (Expanded Hydrophobic Perlite)

REM FOG media is an expanded volcanic ash media treated to be highly hydrophobic. REM FOG media effectively encapsulates liquefied petroleum hydrocarbons (Fats, Oils & Grease including animal fats). The media's hydrophobic characteristic, porous, multi-cellular structure and rough edges allows for greater polishing of flow resulting in the reduction of Total Suspended Solids (TSS). Suspended solid reduction includes but is not limited to debris, trash, silt, sediment, and agglomerated heavy metals. REM FOG Media is an excellent multi-purpose filter media.



REM AC Media (Activated Carbon)

REM AC is a "Bone Char" granular activated carbon. AC media has a micro-porous structure and large surface area providing high levels of adsorption used for the removal of metals, organics, and other pollutants, such as Chlorine, Chloramine, TCE, PCE, TTHMs, Phenols, Pesticides, Detergents.



REM ZEO Media (Zeolite)

REM ZEO is a group of naturally occurring micro-porous minerals consisting of aluminosilicates of sodium, potassium, calcium and barium. ZEO can be readily dehydrated and rehydrated and used as cation exchangers and molecular sieves to remove soluble metals such as copper, lead, zinc, ammonium and some organics. ZEO medium has a variety of water filtration applications.



REM FOG-AC-ZEO Mixed Media Blend

REM FOG-AC-ZEO blend combines the filtration characteristics of all three common media strategies – Hydrophobic Perlite, Granular Activated Carbon and Zeolite.

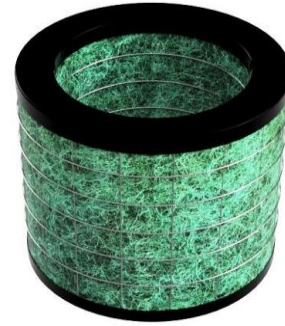


Revel Environmental Manufacturing Inc.

sales@remfilters.com (888) 526-4736 Lic. No. 857410

Northern California 960-B Detroit Avenue Concord, California 94518 P: (925) 676-4736 F: (925) 676-8676	Southern California 2110 South Grand Avenue Santa Ana, California 92705 P: (714) 557-2676 F: (714) 557-2679
--	---

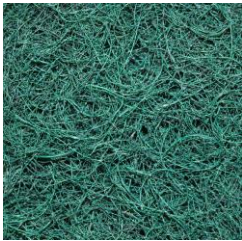
**REM – TR14(12) Cartridge
Configured with
Bioflex (BFTG) media**



REM Media Configuration Options

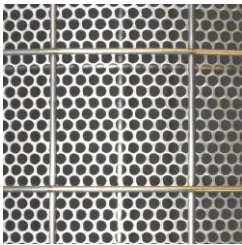
REM Filters can be customized using different media strategies configured to target site-specific pollutants. A combination of media is often recommended to maximize pollutant removal effectiveness.

MADE IN U.S.A.



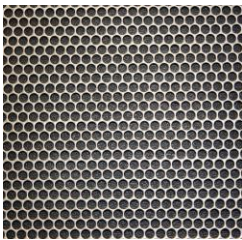
Bioflex (BFTG)

Bioflex is a three dimensional woven natural fiber media designed to capture debris, trash and sediment. Mesh density of 3.5 ounces per square foot minimizes occlusion and blinding and allows for sustained high volume stormwater treatment rates. The exterior edge of the Bioflex is fitted with a netted polyester fiber configured to capture 100% of trash and debris at 5mm or greater in size. REM Bioflex filters are an **APPROVED and CERTIFIED “Full Trash Capture Device”**.



Perforated Stainless Steel Screen (SS-PERF-5)

The filter cartridge houses a perforated Type 304 stainless steel screen. Configured to capture 100% of trash and debris no greater than 5mm. **REM PERF** filters are an **APPROVED and CERTIFIED “Full Trash Capture Device”**.



Perforated Stainless Steel Screen (SS-PERF-2.4)

The filter cartridge houses a perforated Type 304 stainless steel screen. Configured to capture 100% of trash and debris no greater than 2.4mm.

