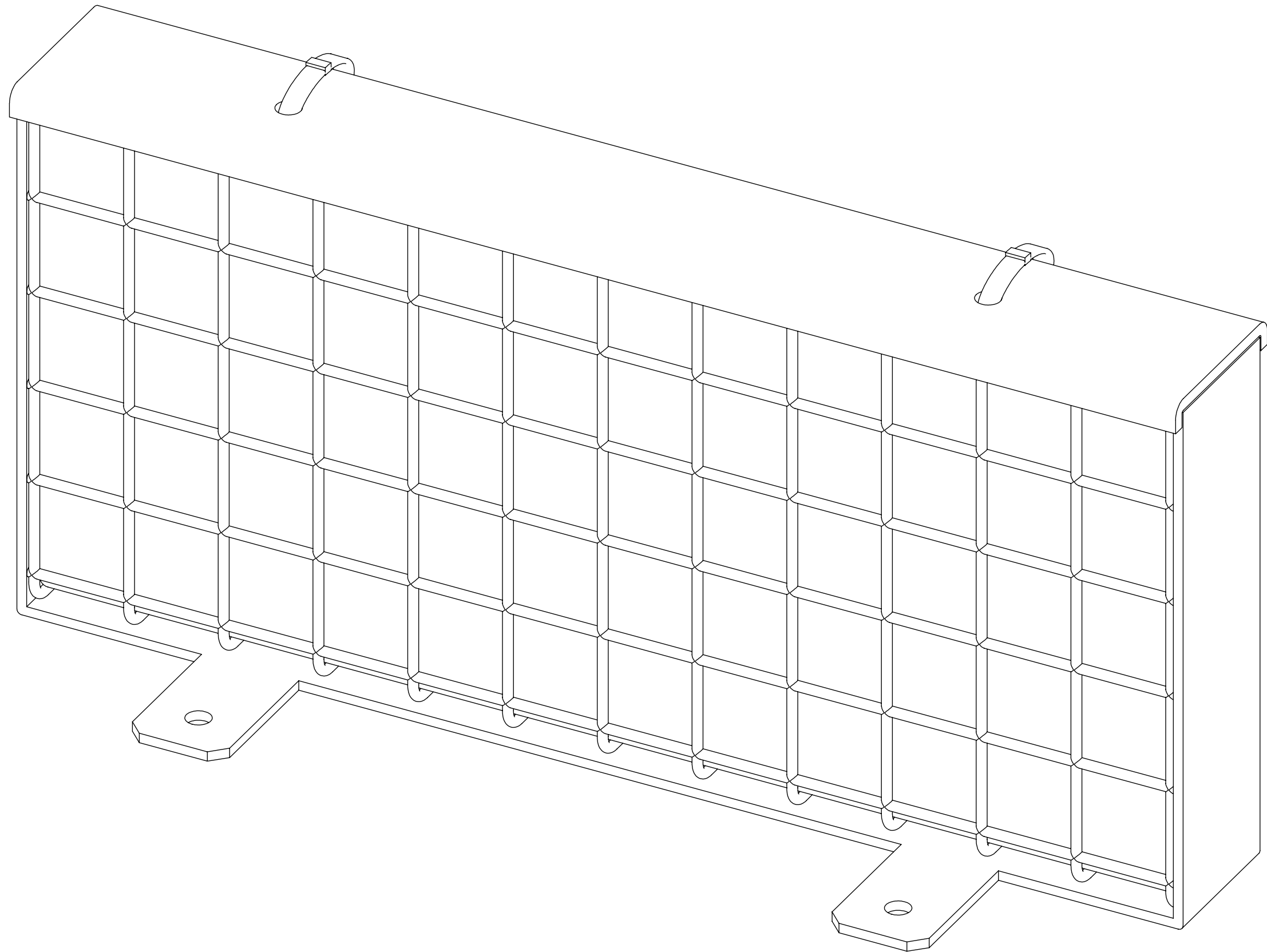
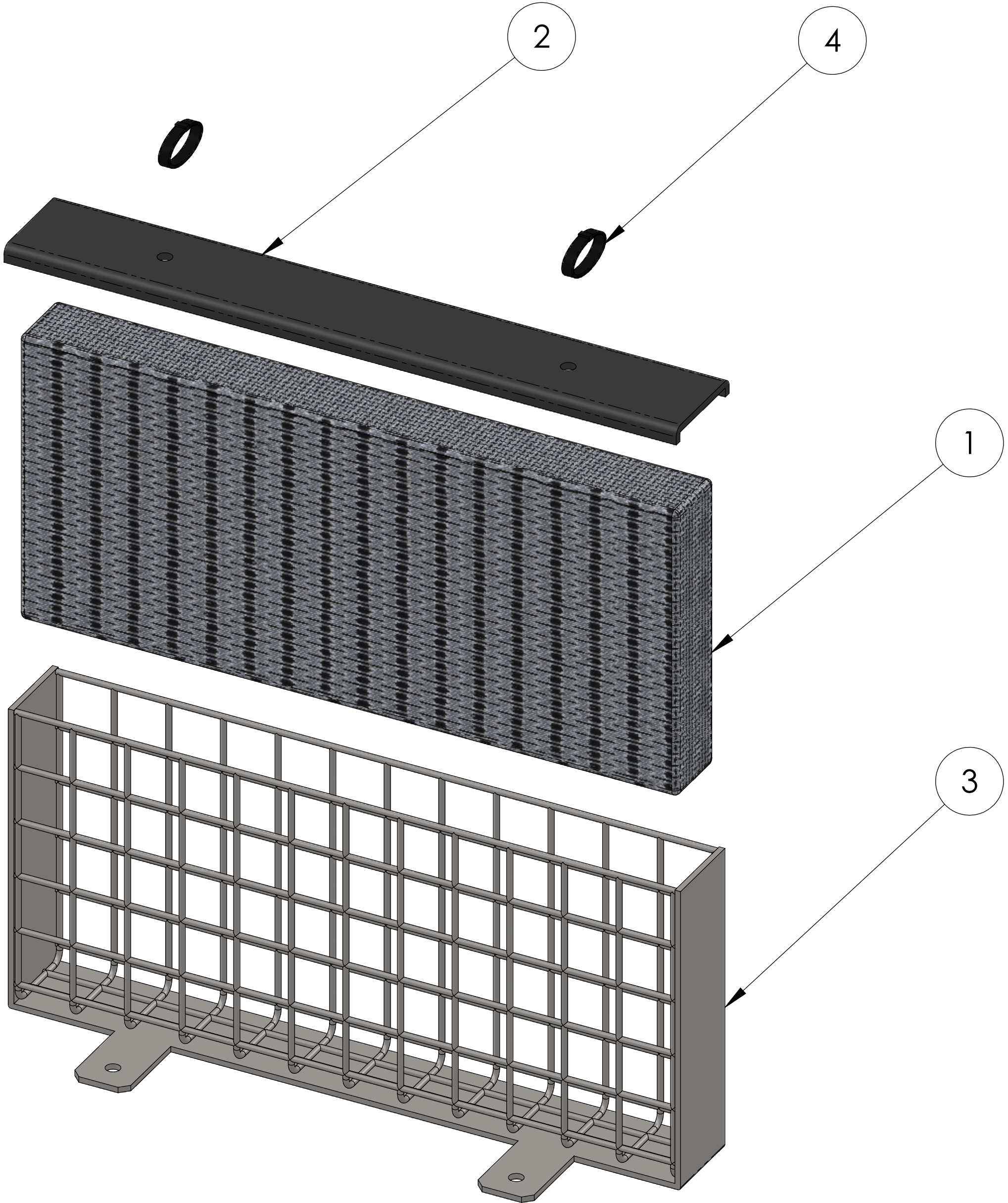


1. All dimensions are in inches, unless otherwise noted.
2. REM TRITON TDAM Filters (TDAM-PERF-FTC) can be sized to fit most industry standard trench drains, parkway drains, shallow structures, catch basins, etc.
3. TDAM-PERF-FTC cartridge housings are constructed utilizing 22ga., Type 304 Stainless Steel.
4. The Full Trash Capture Cartridge screen utilizes 22ga., Type 304 Stainless Steel Perforation. Perforated stainless is configured with a 4.8mm openings, having 51% Open Area for excellent flow rates comparative to its size.
5. Multiple TDAM Filter Inserts can be staged in line with one another in order to provide additional levels of filtration.
6. Secondary filtration is also available using additional media strategies that can address other specific pollutant of concerns beyond just trash capture, such as REM's FOG media, which can effectively encapsulates liquefied petroleum hydrocarbons (Fats, Oils & Grease including animal fats). The media's hydrophobic characteristic allows for greater polishing of flow resulting in the reduction of Total Suspended Solids (TSS). Suspended solid reduction includes but is not limited to debris, trash, silt sediment and agglomerated heavy metals. (Additional media options are available including mixed blends of granulated activated carbon [AC] and Zeolite [ZEO]).
7. TDAM's filter design requires water flows to filter through media, preventing low flow bypass.
8. See REM Specifier Sheets for size, model and flow rate information.
9. REM TRITON filters are to be installed and maintained in accordance with manufacturer recommendations.
10. Maintenance information and replacement REM Media Packs are available upon request by contacting REM at sales@remfilters.com or (888) 526-4736.
11. Patent Pending.
12. Made in the USA.




ITEM NO.	DESCRIPTION	QTY.
1	FILTER MEDIA PACK	1
2	PVC COVER	1
3	T-DAM ENCLOSURE	1
4	ZIP TIE	2



**PROPRIETARY AND CONFIDENTIAL**  
THE INFORMATION CONTAINED IN THIS  
DRAWING IS THE SOLE PROPERTY OF  
<INSERT COMPANY NAME HERE>. ANY  
REPRODUCTION IN PART OR AS A WHOLE  
WITHOUT THE WRITTEN PERMISSION OF  
<INSERT COMPANY NAME HERE> IS  
PROHIBITED.

UNLESS OTHERWISE SPECIFIED:		NAME	DATE
DIMENSIONS ARE IN INCHES		A.C.	2/6/14
TOLERANCES:		DRAWN	
FRACTIONAL ±		CHECKED	
ANGULAR: MATCH ±		ENG APPR.	
BEND ±		MFG APPR.	
ONE PLACE DECIMAL ± 0.2			
TWO PLACE DECIMAL ± 0.1			
INTERPRET ALL GEOMETRIC		Q.A.	
TOLERANCING PER: ASME		COMMENTS:	
MATERIAL			
FINISH			
NEXT ASSY	USED ON		
APPLICATION			



**Revel Environmental Manufacturing Inc.**  
sales@remfilters.com (888) 526-4736 Fax: (916) 835-9141

Raymond, California 95168-1111  
2025-11-11  
2025-11-11  
2025-11-11

San Jose, California 95128-1111  
2025-11-11  
2025-11-11  
2025-11-11

**T-DAM FILTER**

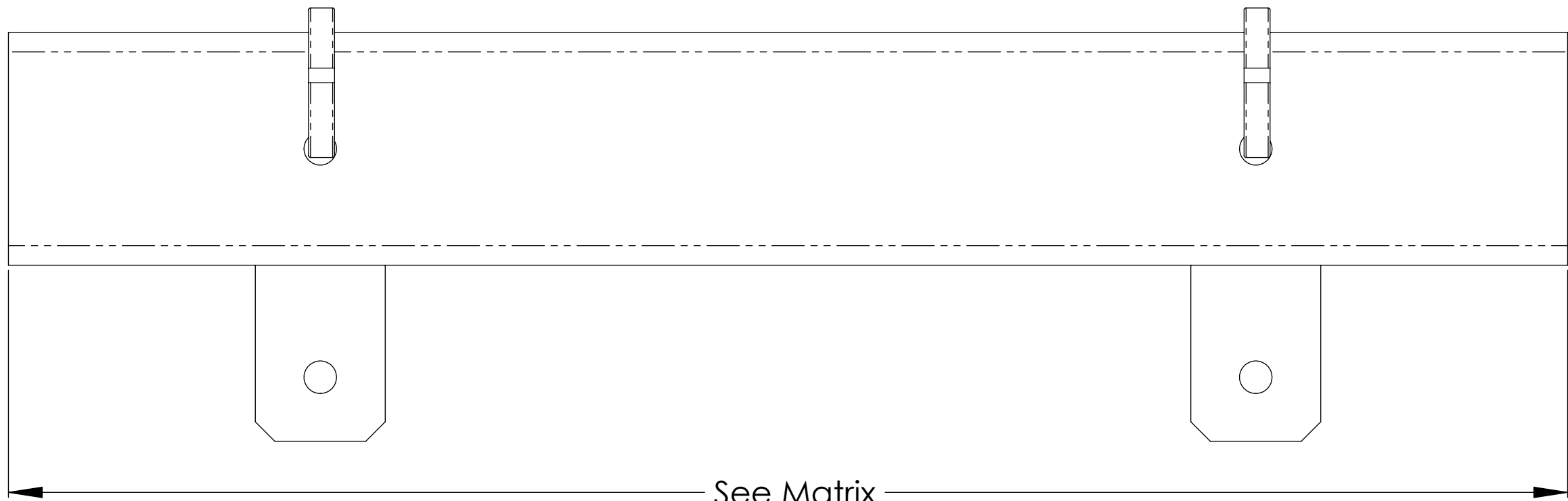
SIZE DWG. NO. REV  
**D 01-002 A**

SCALE: 1:1 WEIGHT: SHEET 1 OF 3

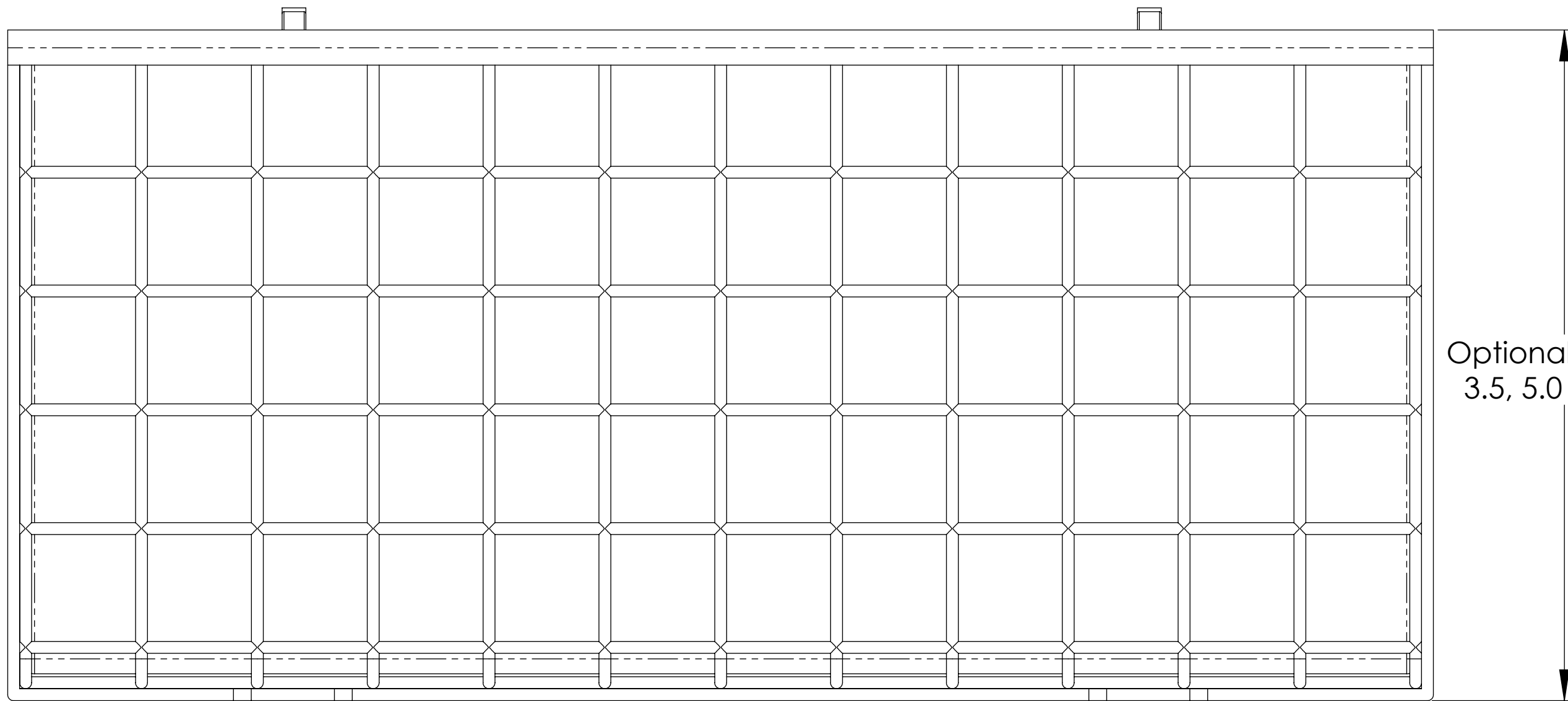
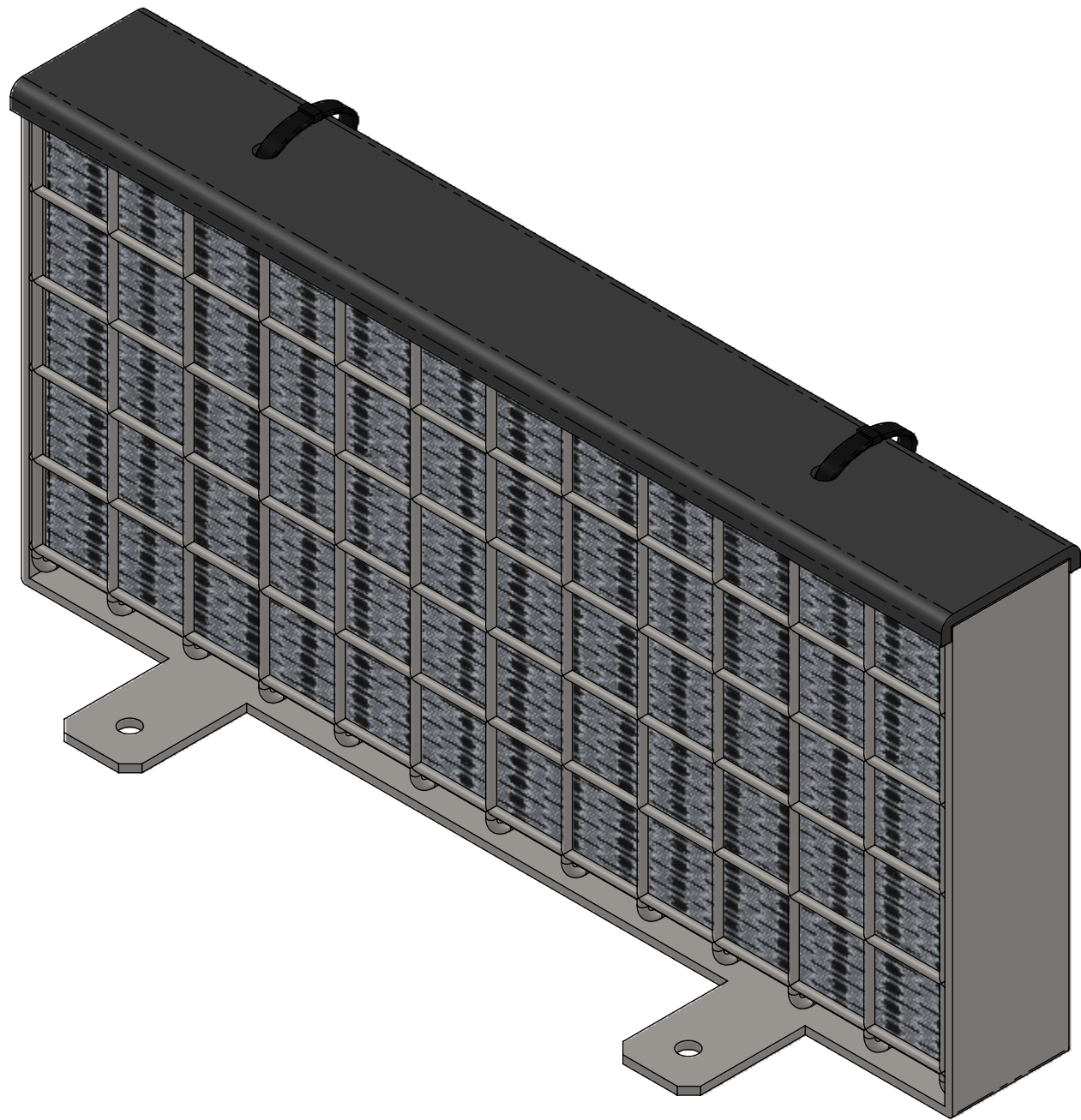


F  
E  
D  
C  
B  
A

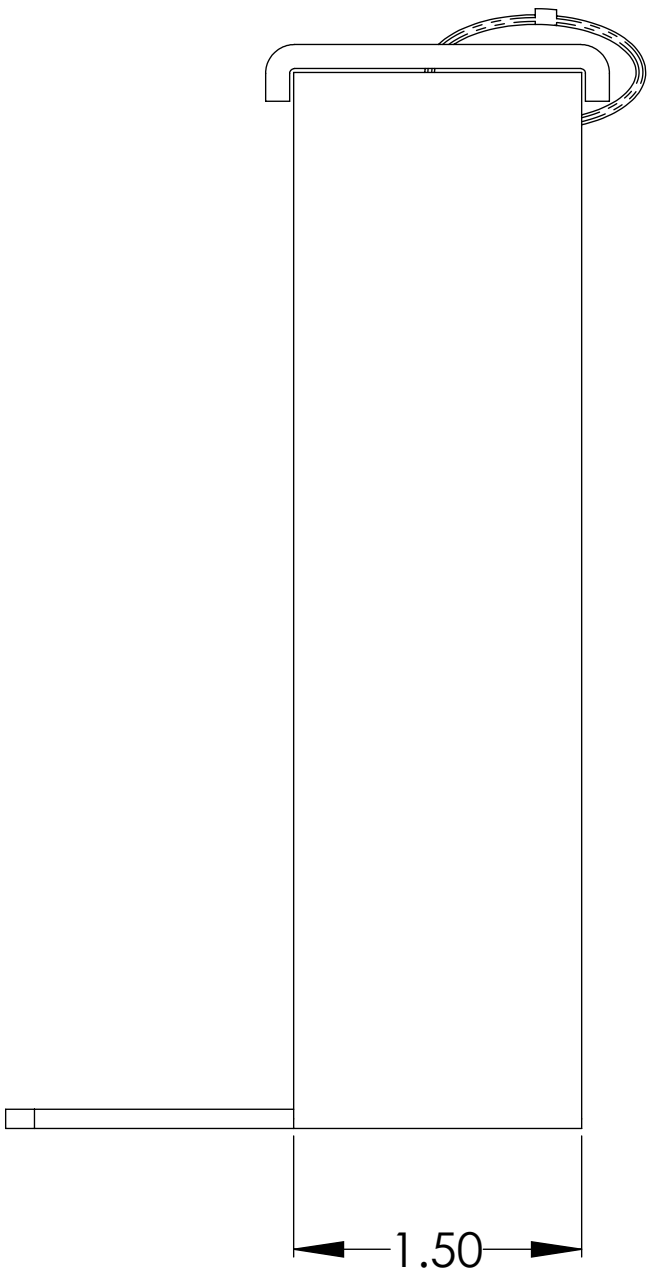
8 7 6 5 4 3 2 1



MODEL #	WIDTH APPRPRIATE FOR:
TT2.0	4" Wide Trench
TDAM5	5" Wide Trench
TDAM6	6" Wide Trench
TDAM8	8" Wide Trench
TDAM10	10" Wide Trench
TDAM12	12" Wide Trench
TDAM15	15" Wide Trench
TDAM18	18" Wide Trench
TDAM24	24" Wide Trench
TDAM36	36" Wide Trench
TDAM48	48" Wide Trench



Optional Height:  
3.5, 5.0 or 10.0

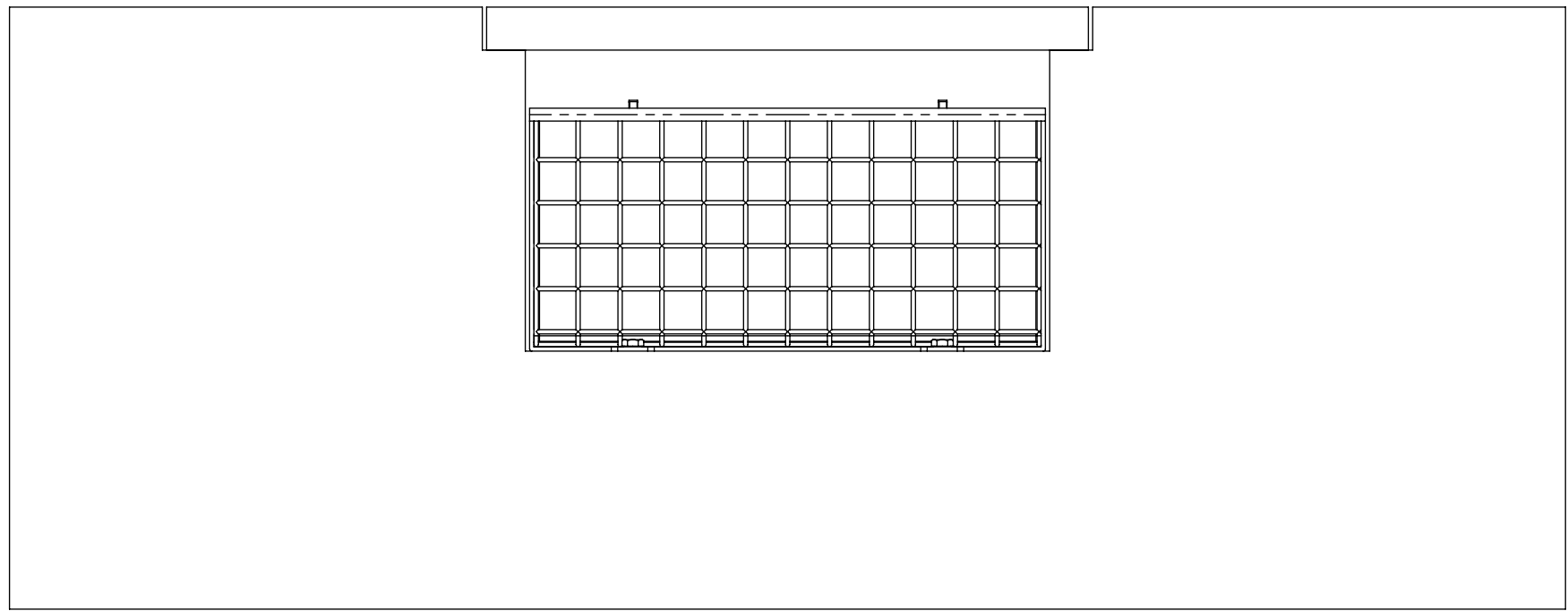
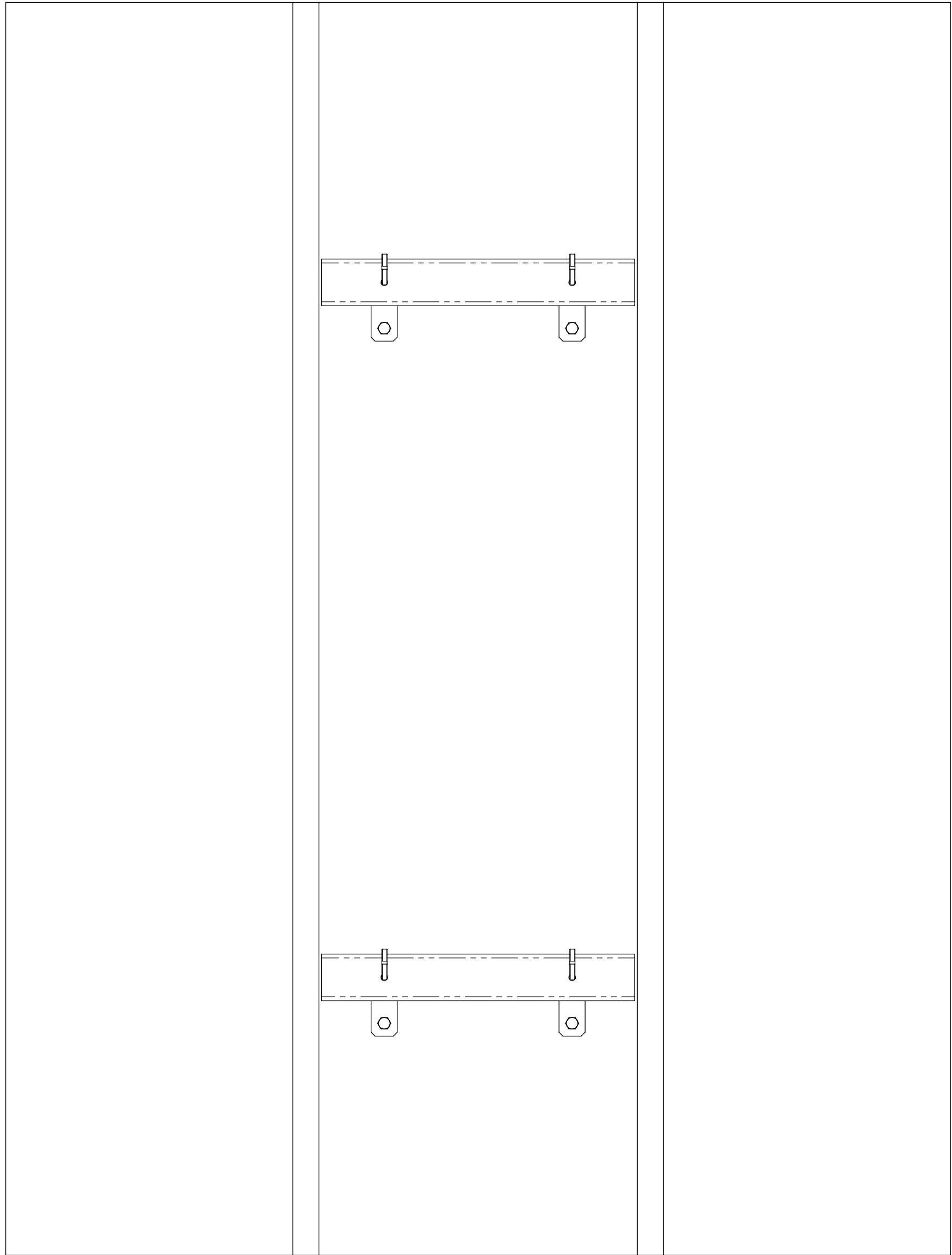


F  
E  
D  
C  
B  
A

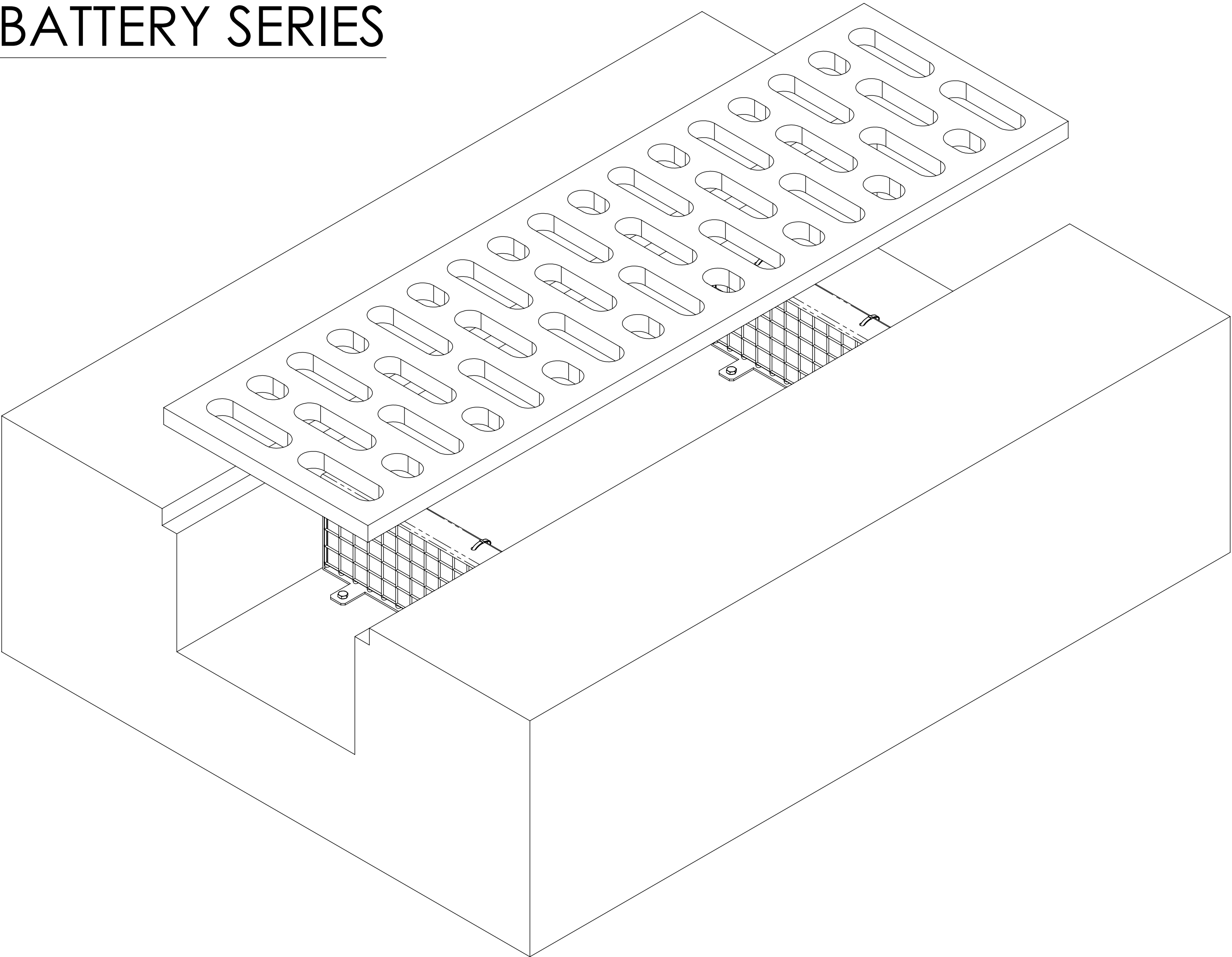
PA  
D  
TDAM\_ASSY

	NAME	DATE	<b>Revel Environmental Manufacturing Inc.</b> 8000 S. 10th Ave. #100 San Jose, CA 95128 Tel: 408.255.7400 Fax: 408.255.7401	
DRAWN	A.C.	2/6/14		
CHECKED				
ENG APPR.				
MFG APPR.				
Q.A.				
COMMENTS:				
SIZE			DWG. NO.	REV
<b>D</b>			<b>01-002</b>	<b>A</b>
SCALE: 1:1			WEIGHT:	SHEET 2 OF 3

GRATE REMOVED IN THIS VIEW




# BATTERY SERIES



T-DAM SHOWN IN BATTERY SERIES, WITH TWO UNITS WORKING IN UNISON TO OPTIMIZE FILTRATION.

FIRST UNIT IS A BFTG BIOFLEX FILTER AND FUNCTIONS AS A PRESCREEN, CAPTURING AND HOLDING HEAVIER SOLIDS, SUCH AS SAND, ROCKS, SEDIMENT, ETC.

SECOND UNIT UTILIZES OUR "FOG" HYDROCARBON REMOVAL MEDIA PACK, DESIGNED TO REMOVE FATS, OILS, AND GREASE FROM THE FLOW.

DRAWN		NAME	DATE			<b>Revel Environmental Manufacturing Inc.</b> info@revel-env.com (845) 526-7354 Fax: 845-875413	
CHECKED		A.C.	2/6/14	2000 Route 100, Suite 100 P.O. Box 100, Route 100 P.O. Box 100, Route 100		2113 South Grand Avenue P.O. Box 100, Route 100 P.O. Box 100, Route 100	
ENG APPR.				TITLE:		T-DAM FILTER	
MFG APPR.				SIZE		DWG. NO.	
Q.A.				D		01-002	
COMMENTS:				SCALE: 1:1		WEIGHT:	
				SHEET 3 OF 3		REV A	